



Where innovation starts

Unfolding TU/e

TU/e

Technische Universiteit
Eindhoven
University of Technology

Where innovation starts





Eindhoven University of Technology (TU/e) is a research-driven university of international standing, where excellent research and excellent education go hand in hand. In the areas of engineering science and technology, we focus on a balanced approach of education, research and valorization of knowledge.

From our lively university campus, situated in the heart of the high-tech Brainport region and equipped with high-quality lab facilities, we make an impact on scientific and societal issues. We do this by delivering excellent groundbreaking research, often in close collaboration with industry, and by providing the education that turns our students into engineers for the future. Our engineers look beyond just technology. They understand what the world needs and can translate scientific knowledge into societal value. Our educational strategy allows students to participate fully in research projects and stimulates entrepreneurship. TU/e engineers easily find employment in the high tech industry or start their own companies.

Our knowledge, innovative technologies, applications and solidly educated engineers find their way into

society, where they help solve pressing issues and answer unasked questions.

To achieve this, we collaborate closely with other universities, scientific institutes, social organizations, government and industry. Together, we translate our research findings into successful innovations and turn our knowledge into societal value through knowledge valorization. We strengthen the knowledge-intensive industry by providing young academic engineers and by generating new business.

We combine top-notch fundamental research with an application-oriented educational approach, characterized by frequent and intensive student-teacher interaction. This is all part of a tight-knit, small-scale community consisting of more than 80 nationalities, where everyone feels welcome and where the well-being of students and staff matters.

Our university connects students, researchers and entrepreneurs. Because we believe innovation starts with people, not with technology. It is our people who make our university into the place where innovation starts and people matter.



Education

Engineers for the future

The first solar-powered family car, a heart valve that grows with you, the care robot, the energy-producing building: all groundbreaking innovations from TU/e scientists and from TU/e students, the engineers for the future. At TU/e, students develop a scientific knowledge base and an understanding of the wider context of technology. Students also participate in research.

In the Bachelor College, students can design their own program. This unique concept allows students the freedom to compose a personal education program that is as broad or as deep as they want. Our mentors guide students in making decisions, and the Bachelor College's basic courses and multidisciplinary team projects create engineers who can look beyond their own fields and engage with society. Our Graduate School builds on this. TU/e engineers have no trouble finding work.

During their time at TU/e, students discover their strengths, develop their profiles and get ready to start the careers of their dreams: as scientists, researchers, designers, process engineers or technical managers.

A challenging educational program like ours requires a supportive and intellectually stimulating studying environment. With our state-of-the-art labs and equipment, students and researchers can explore the boundaries of technology. And with our small-scale, accessible approach, inspiring lectures and modern educational strategies, we attract a diverse student body that includes a growing number of women.

In 2015, TU/e was awarded the best university of technology in the Netherlands for the twelfth time.



Excellent research

Value for society

Established in the 1950s, TU/e has always had strong values: optimism, collaboration and a dedication to society. These values helped Brainport Eindhoven flourish, and resulted in TU/e having the highest number of industry collaborations worldwide. 15% of our scientific publications are in collaboration with industry, and we have the highest number of part-time professors from industry in the Netherlands.

Society's challenges are the driving force for our research: the strategic areas of Health, Energy and Smart Mobility. Our two new research centers, TU/e High Tech Systems and TU/e Data Science, combine the strengths of our university with industry needs and government strategy. TU/e researchers play an important role in new products and companies in the Brainport area and all over the world.

TU/e can only have an impact on society and industry if we deliver world-class research results. This attracts talented students, scientists and lecturers, and stimulates international collaboration. At TU/e, we focus on doing groundbreaking fundamental

research and turning our findings into applications. TU/e is a world leader in photonics, materials and mathematics. We also specialize in high-tech systems and data science.

Our unique selling point is the combination of human sciences and technology. Our publications have high citation scores, consortia we are part of have won prestigious grants, and our researchers receive scientific accolades on a regular basis. This distinguishing excellence is based on our three-pillar strategy: attracting talent, using a multidisciplinary approach and providing a stimulating research environment.

A man in a blue shirt is working on a robotic arm. The arm is illuminated with a bright blue light, and a blue light effect is visible on the right side of the image. The man is looking intently at the arm. The background is dark, and the overall scene suggests a high-tech or industrial environment.

Entrepreneur- ship

TU/e is world leader in publications together with industry, and has a proven track record in research collaborations with industry and creating spin-offs, startups and patents. Entrepreneurship and valorization are very important to us. We turn theories and promising technological concepts into projects and products with direct impact on, for example, patient care, road safety or CO₂ reduction.

We actively connect industry and researchers, arrange industry internships for master's degree students, initiate joint research programs in public-private partnerships and are constantly looking for TU/e research findings with market potential. If the timing is not right for a company to market our technological concepts, we do it ourselves. In recent years, TU/e produced an impressive 120 spin-offs and startups.

Within START@TU/Eindhoven, our entrepreneurial student community, we provide advice to students starting their own company. Every year, we incubate more than 30 knowledge-intensive startups. Within the TU/e campus, the Living Labs test sites for technological concepts play an important role. New technologies are introduced in these 'testing grounds, and turned into valuable applications through valorization.



Connection

TU/e responds to our changing world by creating connections: between researchers, companies, students, science institutes and the government, on an international scale. Through our many collaborations, we can create global impact and relevance.

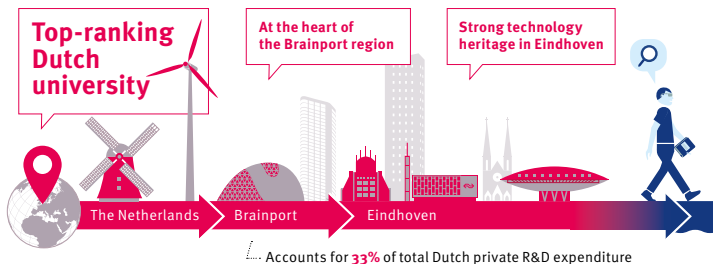
We collaborate with universities and research institutes worldwide. We have strong ties with Utrecht University and Utrecht University Medical Center, the three Dutch Universities of Technology and Wageningen University (4TU), Tilburg University and the EuroTech Universities (Danmarks Tekniske Universitet, École Polytechnique Fédérale de Lausanne, Technische Universität München and TU/e). Together, we aim to find technological solutions for the great challenges facing modern society, through groundbreaking research, education and innovation. Connection and innovation are at the heart of TU/e's values.

A photograph of a modern campus scene. In the foreground, a group of young men are sitting on a wide, grey stone ledge. The man on the far left is sitting cross-legged, wearing a black t-shirt and shorts, with his arms crossed and looking off to the side. Next to him, another man is lying down, wearing a light-colored t-shirt and jeans, looking towards the right. To his right, a third man is sitting up, wearing a red and blue plaid shirt and dark pants, looking towards the right. In the background, other students are walking around, and a modern building with large glass windows is visible. The scene is reflected in a pool of water in the foreground. A dark blue diagonal banner is overlaid on the right side of the image, containing the text "Campus & community" in white.

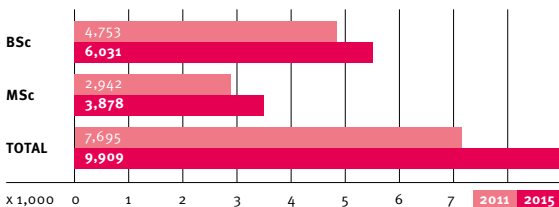
Campus & community

The TU/e campus is both a physical and a virtual place: a living lab that connects people with each other and the world. The TU/e campus is home to more than 60 businesses and welcomes more than 15,000 people every day. Our lively campus community facilitates connections between brilliant minds, in an open, friendly, vibrant environment that welcomes, inspires, motivates and supports.

At TU/e, we have a flourishing community of staff and students of many different nationalities. We are an open, inclusive and caring university. We believe that promoting this connectedness and a culture of trust and shared ambitions enables us all to thrive. And more. We encourage everyone – both students and staff – to play an active part in this TU/e community. Because we believe that when we are personal, passionate, curious and connected, our university is the place where innovation starts.

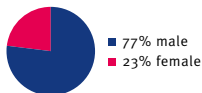
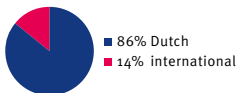


Student growth



9,909 Total number of students
(+29% compared to 2011)

More than **80** nationalities



Engineers for the future

92%
Of the graduated students find a job within 6 months

2,426
Total degrees awarded
911 BSc / 1,144 MSc
137 PDEng / 234 PhD

40,000
Alumni
85% Dutch
15% international

3 Strategic areas



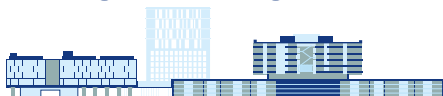
Energy



Health



Smart Mobility



The TU/e campus covers an area of **75** hectares



Ecosystem & characteristics



Ultra-modern
cleanroom



Living
labs



11
Knowledge
institutes



18
Top research
facilities



2,484
Scientific
publications



20
Patents



8
Spin-offs



28
Start-ups



International working environment

3,145 Total staff



67% Dutch



63% male



33% international



37% female

1,980 Research staff

138 Full professors
120 Parttime professors
841 PhD fellows
881 Other



Rankings




CWTS Leiden
Ranking:
TU/e No. 1
in industry cooperation



National Student
Survey (NSE):
TU/e No. 1
university



Elsevier Faculty
Rating:
TU/e No. 1
university



Visiting address

De Zaal
5612 AJ Eindhoven
The Netherlands
T: + 31 40 247 4009
E: info@tue.nl

www.tue.nl